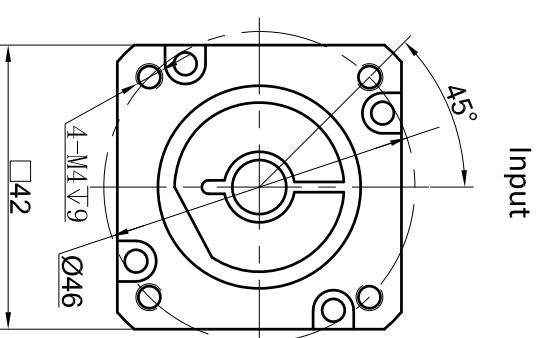
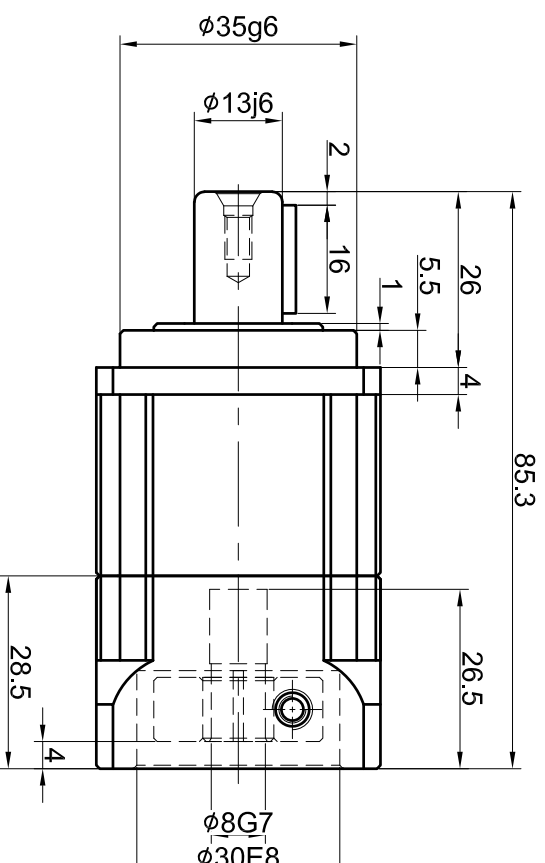
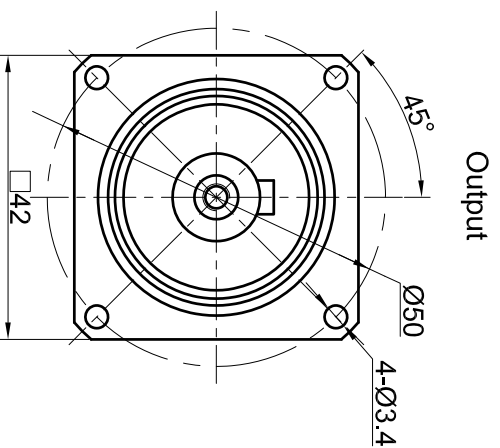
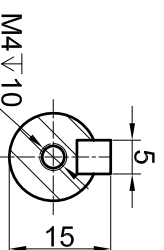
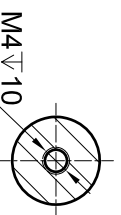


Customer name:



S1

52



Transmission ratio	( <u>  A  </u> ):1	Mass moments of inertia	( <u>  B  </u> )Kg.cm <sup>2</sup>											
Rated output torque	( <u>  C  </u> )Nm	Max.Output torque	( <u>  D  </u> )Nm											
Rated input speed	5000rpm	Max input speed	10000rpm		10	0.03	14	25.2	Sign/Date					
					7	0.03	19	34.2						
					5	0.03	20	36						
					4	0.03	19	34.2						
Max.radial force	780N	Max.axial force	390N	Ratio	A	B	C	D		Ratio	A	B	C	D
Efficiency	≥ 97%	Operating temperature	-20°~+90°											
Mounting position	Any	Lubrication method	Synthetic grease											
Weight ±3%	0.5Kg	Service life	20000h											
Standard backlash	≤ 5 arcmin	Protection class	IP65											
Motor power		Noise level	55dB											
Motor dimensions														

NOTE														