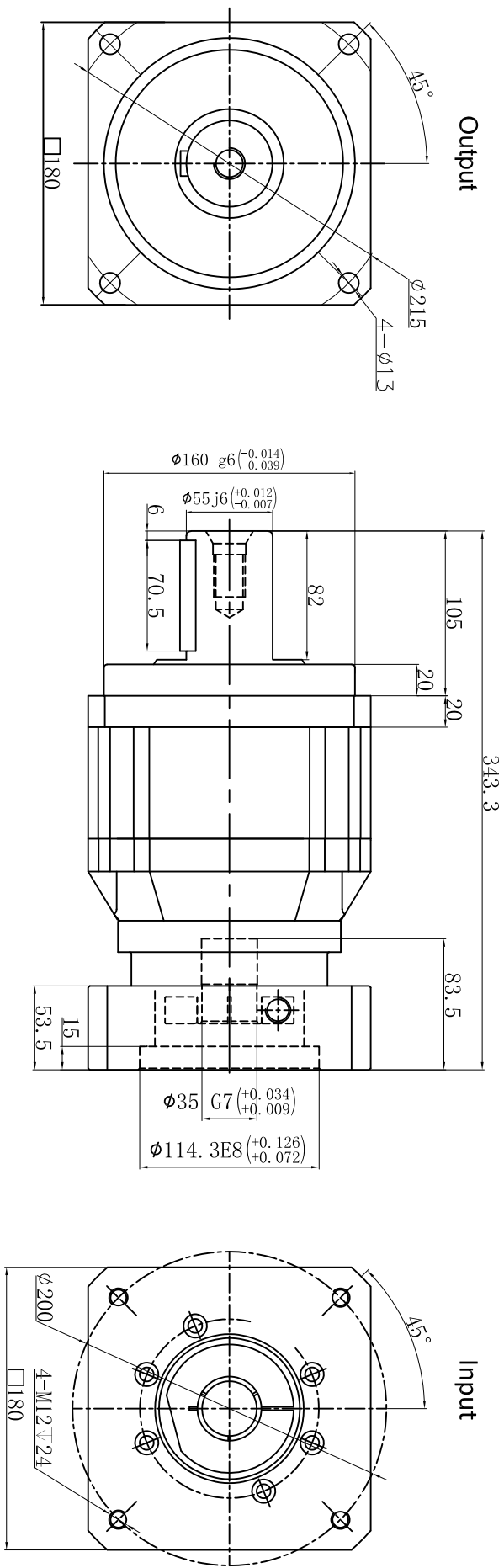


Customer name:



Transmission ratio	(<u> A </u>):1	Mass moments of inertia	(<u> B </u>)kg.cm ²				
Rated output torque	(<u> C </u>)Nm	Max.output torque	(<u> D </u>)Nm	40	7.42	1000	1800
Rated input speed	3000rpm	Max input speed	6000rpm	35	7.42	1100	1980
Max.radial force	14500N	Max.axial force	7250N	30	7.42	1108	1994.4
Efficiency	≥ 94%	Operating temperature	-20°~+90°	25	7.42	1200	2160
Mounting position	Any	Lubrication method	Synthetic grease	20	7.42	1050	1890
Weight ±3%	34Kg	Service life	20000h	15	7.42	590	1062
Standard backlash	≤ 7 arcmin	Protection class	IP65	Ratio	A	B	C
Motor power		Noise level	66dB				
Motor dimensions							

Note							
				Mark	No.	Sign	Date
				DRAW			
				CHEC			
				APPR			
				RULE			

Precision planetary reducer				TB180			
				TB180-L2			

Shaft Type Precision							
----------------------	--	--	--	--	--	--	--

Above specifications are for standard reducer and may be subject to change without notice.