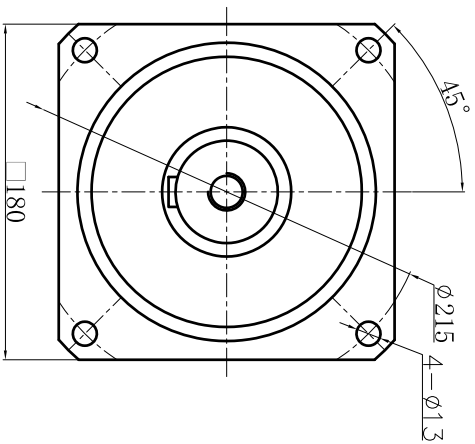
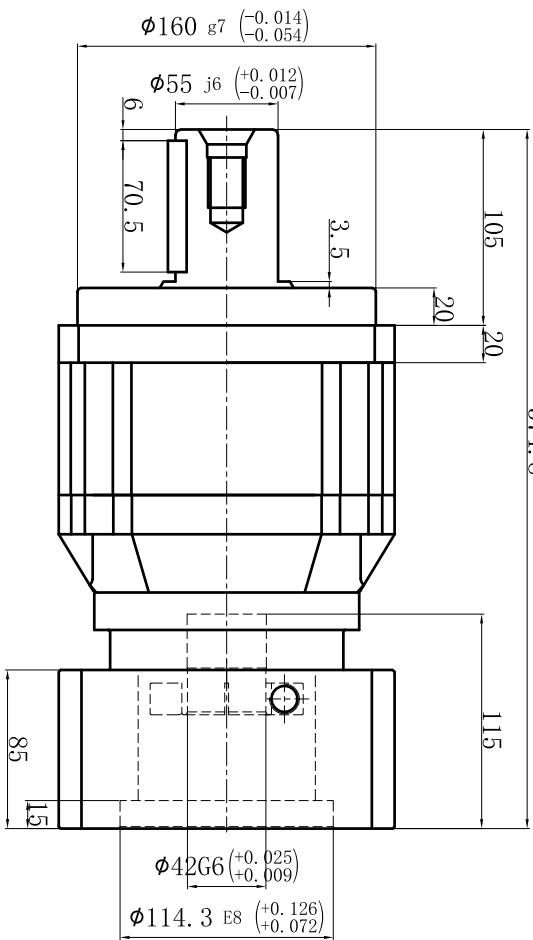


Customer name:

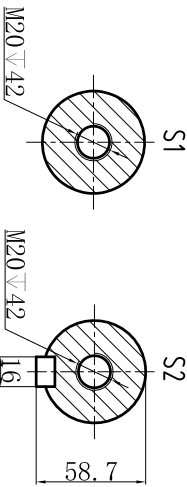
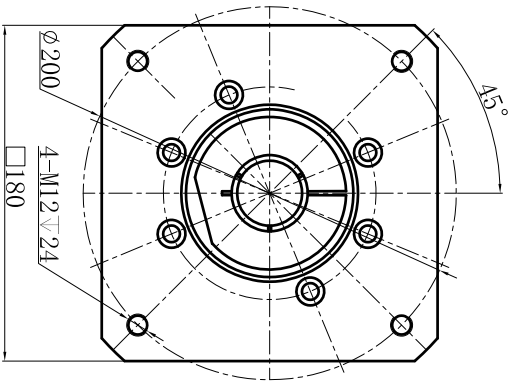
Output




374.8



Input



Transmission ratio	(<u> A </u>):1	Mass moments of inertia	(<u> B </u>)Kg.cm ²	<div>M20 V 42/</div> <div>M20 V 42/</div> <div>lb</div>																		
Rated output torque	(<u> C </u>)Nm	Max.output torque	(<u> D </u>)Nm	40	7.42	1000	1800	Sign/Date														
Rated input speed	3000rpm	Max input speed	6000rpm	35	7.42	1100	1980			100	7.03	910	1638									
				30	7.42	1108	1994.4			80	7.03	1000	1800									
				25	7.42	1200	2160			70	7.03	1100	1980									
				20	7.42	1050	1890			60	7.03	1108	1994.4									
				15	7.42	590	1062			50	7.03	1200	2160									
Efficiency	≥ 94%	Operating temperature	-20°~+90°	Ratio	A	B	C	D					Ratio	A	B	C	D					
Mounting position	Any	Lubrication method	Synthetic grease	Note											Precision planetary reducer				TB180			
Weight ±3%	34Kg	Service life	20000h																			
Standard backlash	≤ 7 arcmin	Protection class	IP65	Mark	No.	Sign	Date									TB180-L2						
Motor power		Noise level	66dB																	Shaft Type		Precision
Motor dimensions																						



Note

Mark

No.

Sign

Date

Precision planetary reducer

TB180

TB180-L2



Shaft Type Precision

Above specifications are for standard reducer and may be subject to change without notice.