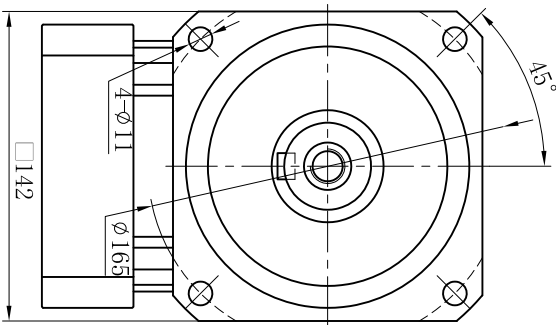


Customer Name:

Output



(288)

345.5

97

15

79

$\phi 130g6 \begin{pmatrix} -0.014 \\ -0.039 \end{pmatrix}$

$\phi 40j6 \begin{pmatrix} +0.011 \\ -0.005 \end{pmatrix}$

4

70.5

74.5

16

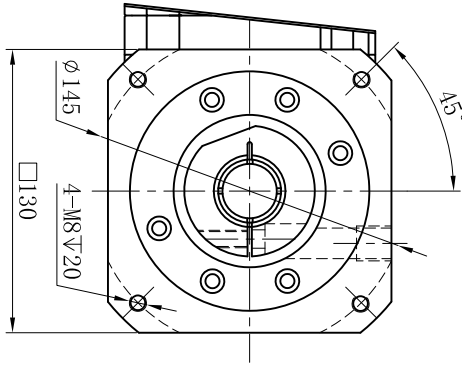
(131)

$\phi 24G7 \begin{pmatrix} +0.028 \\ +0.007 \end{pmatrix}$

$\phi 110F8 \begin{pmatrix} +0.126 \\ +0.072 \end{pmatrix}$

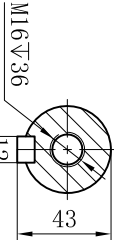
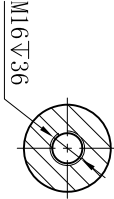
42



Input



S1

S2



| | | | | | | | | | | | | | |
|---------------------|------------|-------------------------|-------------------------|--|--|-------------------|----------------------|-----------------------|----------------------|------|-----|------|---|
| Transmission Ratio | (A):1 | Mass Moments Of Inertia | (B)Kg.cm ² | 25 | 6.84 | 650 | 1170 | Sign/Date | 80 | 6.84 | 500 | 900 | |
| Rated Output Torque | (C)Nm | Max Output Torque | (D)Nm | 30 | 6.84 | 600 | 1080 | | 100 | 6.84 | 460 | 828 | |
| | | | | 35 | 6.84 | 555 | 999 | | 120 | 6.25 | 600 | 1080 | |
| | | | | 40 | 6.84 | 500 | 900 | | 140 | 6.25 | 555 | 999 | |
| | | | | 50 | 6.84 | 650 | 1170 | | 160 | 6.25 | 500 | 900 | |
| Rated Input Speed | 3000rpm | Max Input Speed | 6000rpm | 60 | 6.84 | 600 | 1080 | 200 | 6.25 | 460 | 828 | | |
| | | | | | | | | | | | | | |
| Max Radial Force | 9400N | Max Axial Force | 4700N | | | | | | | | | | |
| Efficiency | ≥ 92% | Operating Temperature | -20°~+90° | Ratio | A | B | C | D | Ratio | A | B | C | D |
| Mounting Position | Any | Lubrication Method | Synthetic grease | Note | | | | | | | | | |
| | | | | | | | | | | | | | |
| | | | | | | | | | | | | | |
| | | | | | | | | | | | | | |
| Weight ±3% | 21.4Kg | Service Life | 20000h | <div>Mark</div> <div>No.</div> <div>Sign</div> <div>Date</div> | <div>PRECISION PLANETARY REDUCER</div> | <div>TBR142</div> | <div>TBR142-L2</div> | <div>Shaft Type</div> | <div>Precision</div> | | | | |
| Standard Backlash | ≤ 9 arcmin | Protection Class | IP65 | | | | | | | | | | |
| | | | | | | | | | | | | | |
| | | | | | | | | | | | | | |
| | | | | | | | | | | | | | |
| Motor Power | -- kW | Noise Level | 70dB | <div></div> | <div></div> | <div>RULE</div> | | | | | | | |
| | | | | | | | | | | | | | |
| Motor Dimensions | | | | | | | | | | | | | |

Above specifications are for standard reducer and may be subject to change without notice.