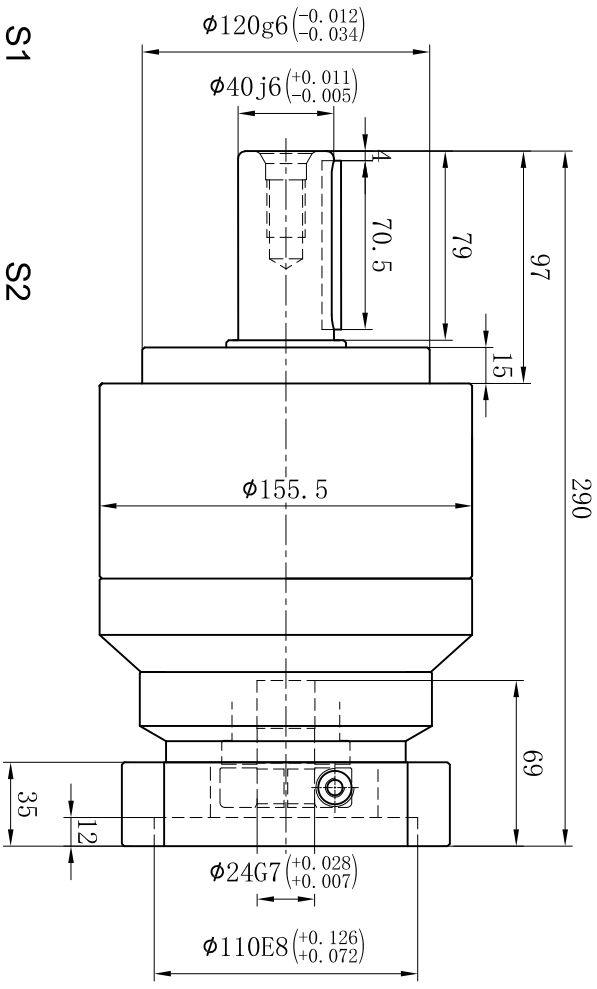
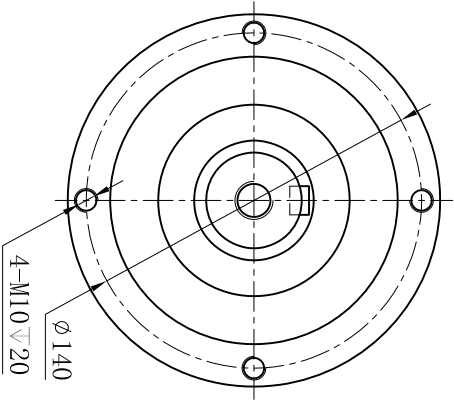
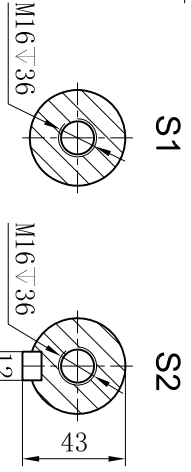
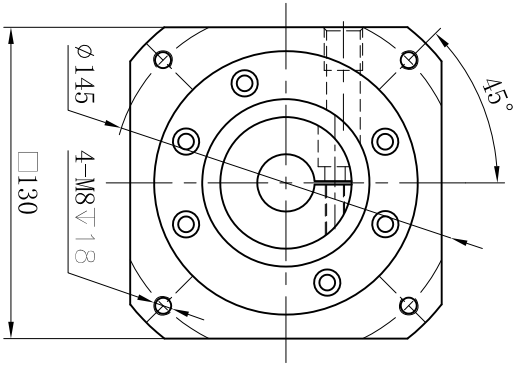




Customer Name:

Output



Input



Transmission Ratio	(<u> A </u>):1	Mass Moments Of Inertia	(<u> B </u>)Kg.cm ²																	
Rated Output Torque	(<u> C </u>)Nm	Max Output Torque	(<u> D </u>)Nm	15	2.71	340	612	Sign/Date			50	2.54	650	1170						
Rated Input Speed	3000rpm	Max Input Speed	4000rpm	20	2.71	535	963				60	2.54	600	1080						
				25	2.71	650	1170				70	2.54	550	990						
				30	2.71	600	1080				80	2.54	500	900						
				35	2.71	550	990				100	2.54	445	801						
Max Radial Force	9400N	Max Axial Force	4700N	40	2.71	500	900													
Efficiency	≥ 94%	Operating Temperature	-20°~+90°	Ratio	A	B	C	D				Ratio	A	B	C	D				
Mounting Position	Any	Lubrication Method	Synthetic grease	Note							Precision Planetary Reducer			TCE155						
Weight ±3%	20Kg	Service Life	20000h																	
Standard Backlash	≤ 7 arcmin	Protection Class	IP65	Mark																
				No.																
Motor Power	-- kW	Noise Level	65dB																	
Motor Dimensions																				
																Shaft Type		Precision		

Above specifications are for standard reducer and may be subject to change without notice.