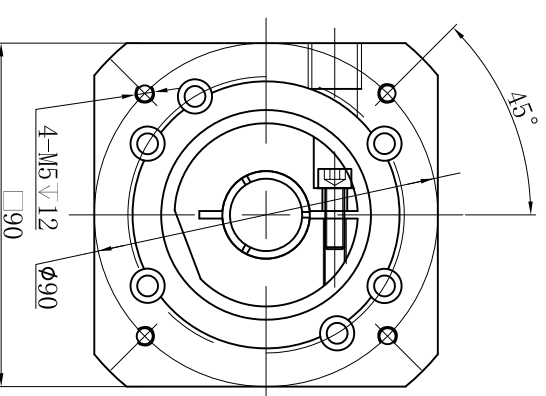
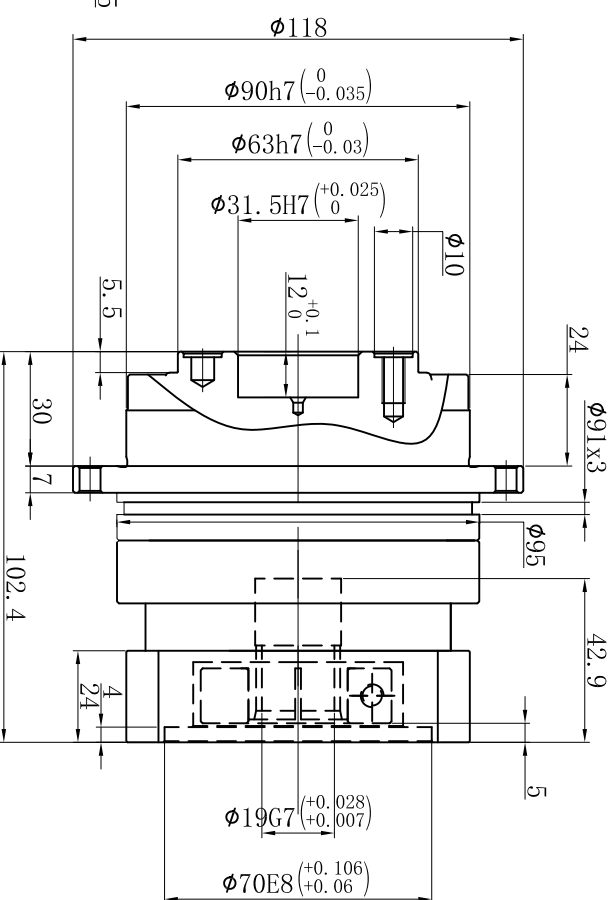
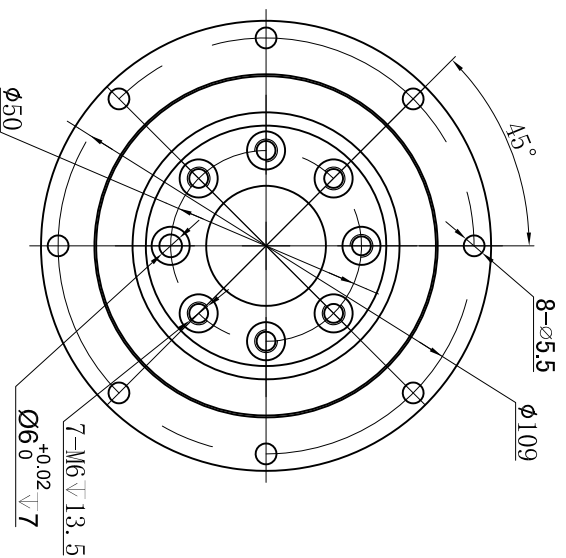


Customer name:

Output





Input

Transmission ratio	(<u> A </u>):1	Mass moments of inertia	(<u> B </u>)Kg.cm ²
Rated output torque	(<u> C </u>)Nm	Max.output torque	(<u> D </u>)Nm
Rated input speed	4000rpm	Max input speed	8000rpm
Max.radial force	--	Max.axial force	2850N
Efficiency	≥ 97%	Operating temperature	-20~+90°
Mounting position	Any	Lubrication method	Synthetic grease
Weight ±3%	3.9Kg	Service life	20000h
Standard backlash	≤ 5 arcmin	Protection class	IP65
Motor power		Noise level	60dB
Motor dimensions			

	10	0.44	102	183	Sign/Date						
	7	0.45	140	252							
	5	0.47	160	280							
	4	0.48	130	234							
Ratio	A	B	C	D		Ratio	A	B	C	D	

Note						Precision planetary reducer	TD090

	Mark	No.	Sign	Date	Precision planetary reducer	TD090-L1	Shaft Type	Precision	
									DRAW
									CHEC
									APPR
									RULE



Above specifications are for standard reducer and may be subject to change without notice.