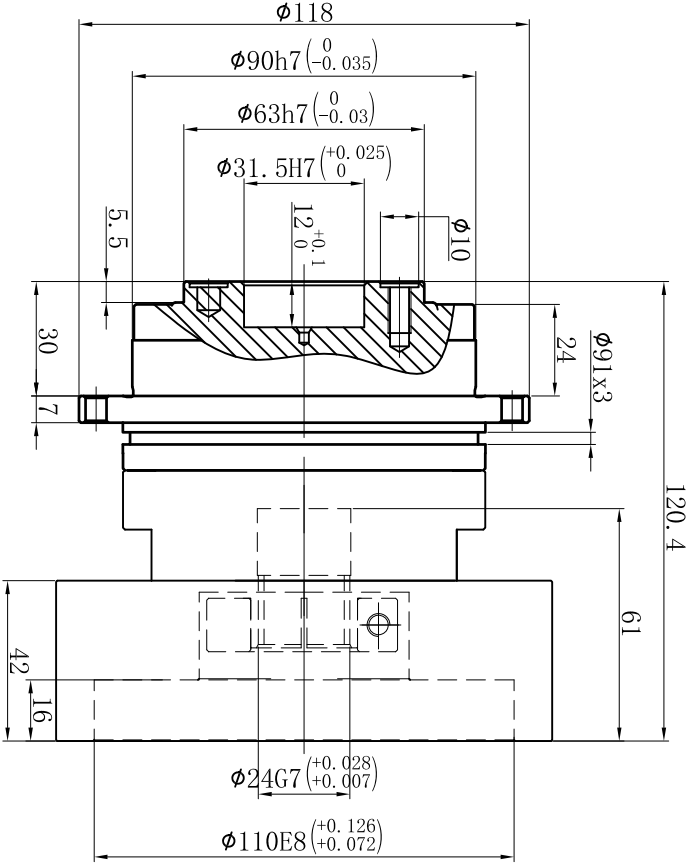
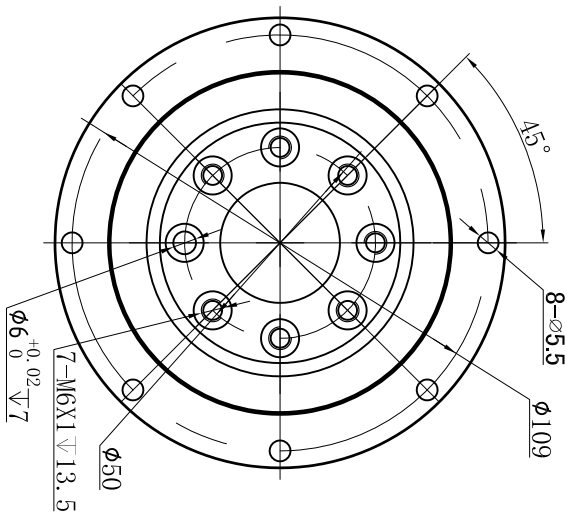
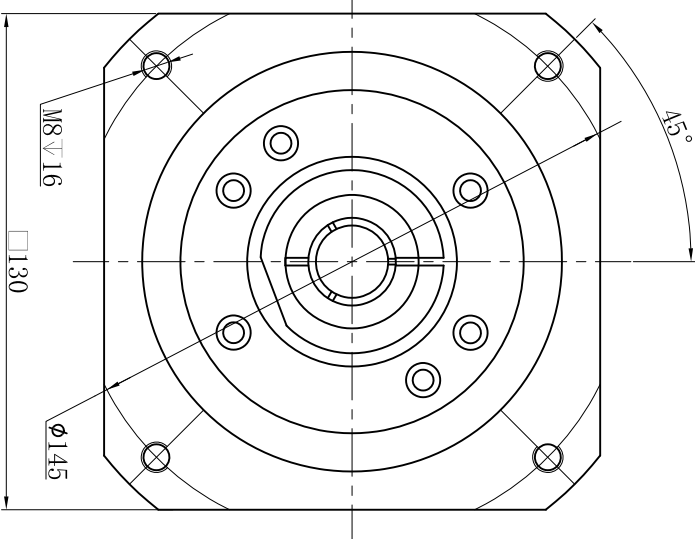


Customer name:

Output



Input



Transmission ratio	(<u> A </u>):1	Mass moments of inertia	(<u> B </u>)Kg.cm ²															
Rated output torque	(<u> C </u>)Nm	Max.output torque	(<u> D </u>)Nm															
Rated input speed	4000rpm	Max input speed	8000rpm			10		0.44	102	183	Sign/Date							
						7		0.45	140	252								
						5		0.47	160	280								
						4		0.48	130	234								
Max.radial force	--	Max.axial force	2850N	Ratio		A	B	C	D									
Efficiency	≥ 97%	Operating temperature	-20°~+90°								Ratio		A	B	C	D		
Mounting position	Any	Lubrication method	Synthetic grease	Note							Precision planetary reducer		TD090					
Weight ±3%	3.9Kg	Service life	20000h										TD090-L1					
Standard backlash	≤ 5 arcmin	Protection class	IP65												Shaft Type		Precision	
Motor power		Noise level	60dB															
Motor dimensions																		