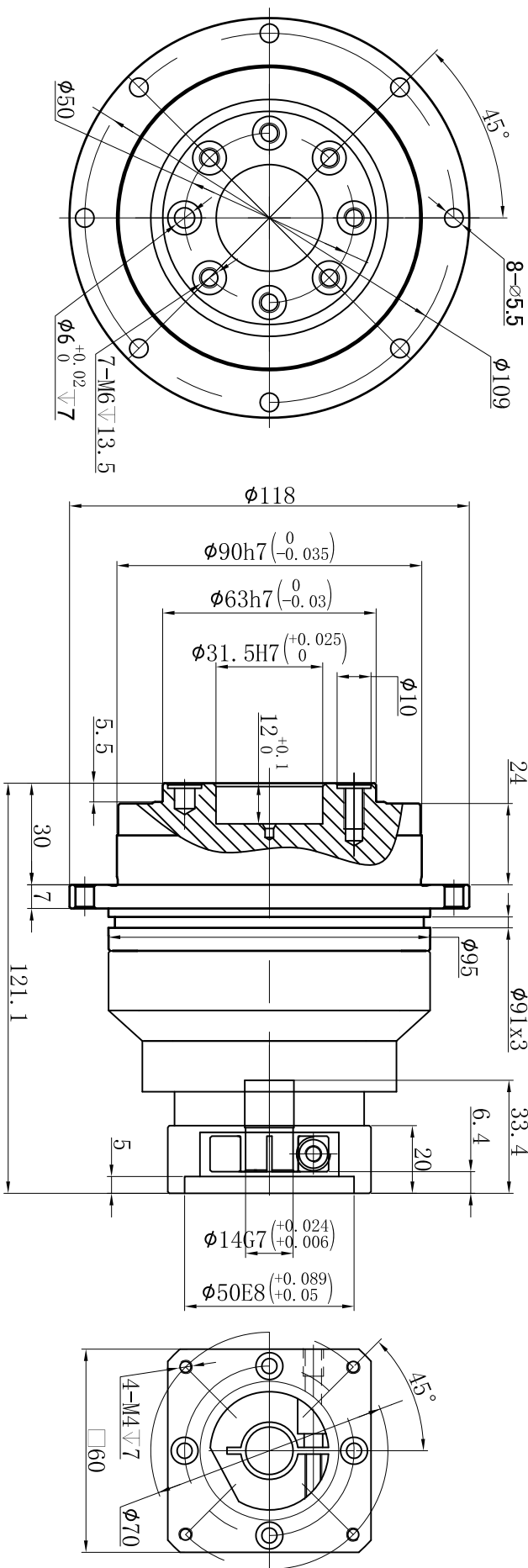


Customer name:

Output



Input

Transmission ratio	(<u> A </u>):1	Mass moments of inertia	(<u> B </u>)Kg.cm ²															
Rated output torque	(<u> C </u>)Nm	Max.output torque	(<u> D </u>)Nm	40	0.13	123	221	Sign/Date										
				35	0.13	140	252				100	0.13	102	183				
Rated input speed	4000rpm	Max input speed	8000rpm	25	0.13	160	280				70	0.13	140	252				
Max.radial force	--	Max.axial force	2850N	20	0.13	130	234											
Efficiency	≥ 94%	Operating temperature	-20°~+90°	Ratio	A	B	C	D						Ratio	A	B	C	D
Mounting position	Any	Lubrication method	Synthetic grease	Note										Precision planetary reducer				TD090
Weight ±3%	3.1Kg	Service life	20000h															
Standard backlash	≤ 7 arcmin	Protection class	IP65															
Motor power		Noise level	60dB															
Motor dimensions																		