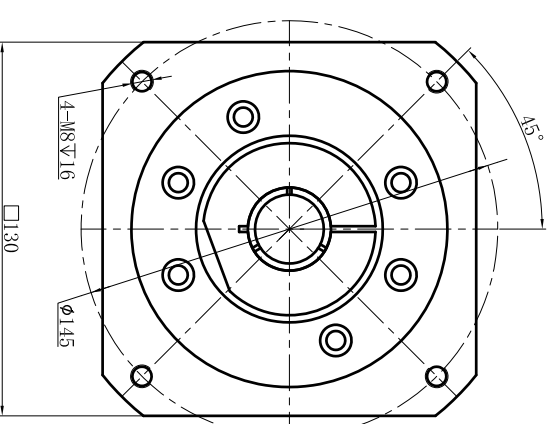
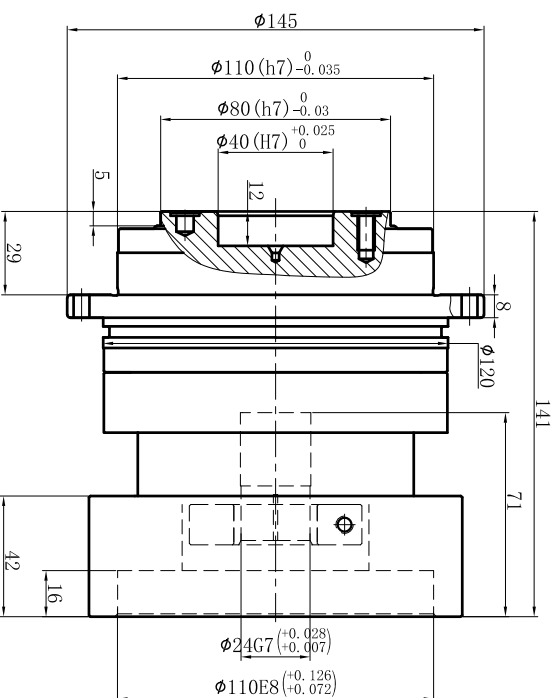
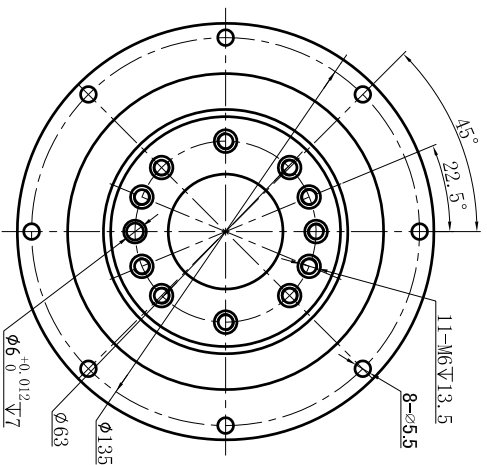


Customer name:

## Output




Input


Transmission ratio	( <u>  A  </u> ):1	Mass moments of inertia	( <u>  B  </u> )Kg.cm <sup>2</sup>
Rated output torque	( <u>  C  </u> )Nm	Max.Output torque	( <u>  D  </u> )Nm
Rated input speed	4000rpm	Max input speed	8000rpm
Max.radial force	-	Max.axial force	2990N
Efficiency	≥ 97%	Operating temperature	-20°~+90°
Mounting position	Any	Lubrication method	Synthetic grease
Weight ±3%	5.9Kg	Service life	20000h
Standard backlash	≤ 5 arcmin	Protection class	IP65
Motor power		Noise level	60dB
Motor dimensions			

	10	2.57	235	423	Sign/Date						
	7	2.62	300	540							
	5	2.71	333	599							
	4	2.87	290	522							
Ratio	A	B	C	D			Ratio	A	B	C	D

NOTE					Precision Planetary Reducer	TD110

Mark	No.	Sign	Date	TD110-L1

	DRAW	
	CHEC	
	APPR	
	RULE	

	Shaft Type	Precision

Above specifications are for standard reducer and may be subject to change without notice.