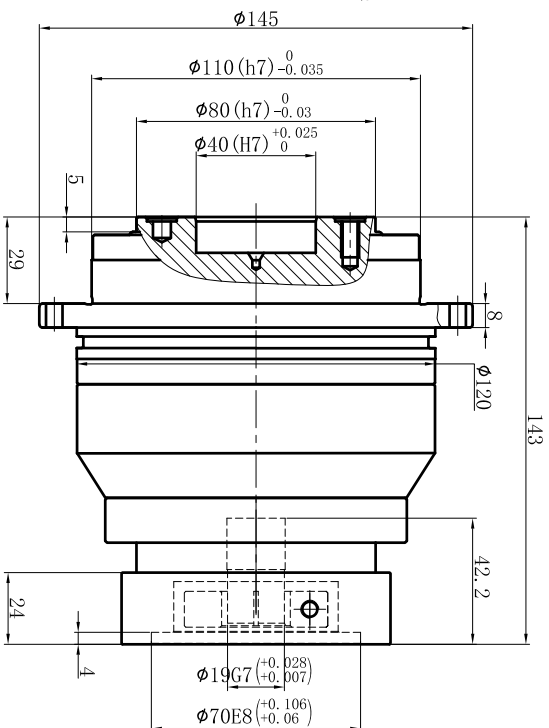
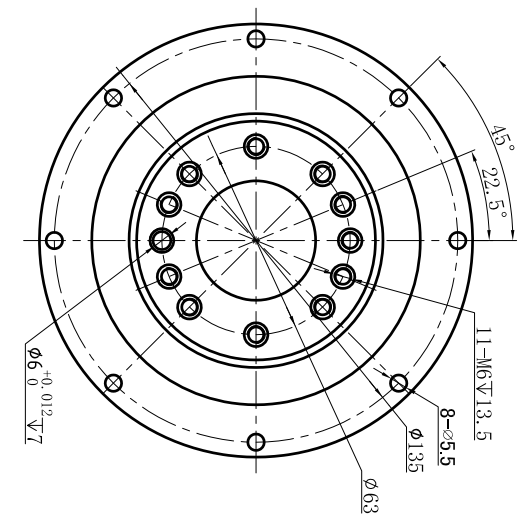
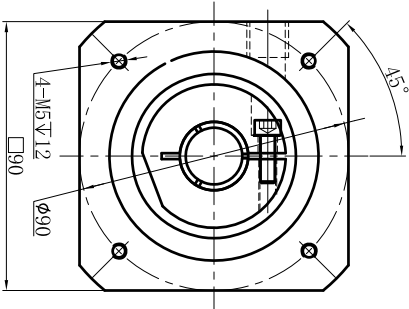


Customer name:

Output



Input



Transmission ratio	(<u> A </u>):1	Mass moments of inertia	(<u> B </u>)Kg.cm ²		40	0.47	260	468	Sign/Date					
Rated output torque	(<u> C </u>)Nm	Max.Output torque	(<u> D </u>)Nm		35	0.47	300	540			100	0.44	235	423
Rated input speed	4000rpm	Max input speed	8000rpm		25	0.47	333	599			70	0.44	300	540
Max.radial force	-	Max.axial force	2990N		20	0.47	290	522						
Efficiency	≥ 94%	Operating temperature	-20°~+90°	Ratio	A	B	C	D		Ratio	A	B	C	D
Mounting position	Any	Lubrication method	Synthetic grease	NOTE						Precision Planetary Reducer	TD110-L2			
Weight ±3%	7.9Kg	Service life	20000h											
Standard backlash	≤ 7 arcmin	Protection class	IP65											
Motor power		Noise level	60dB											
Motor dimensions														