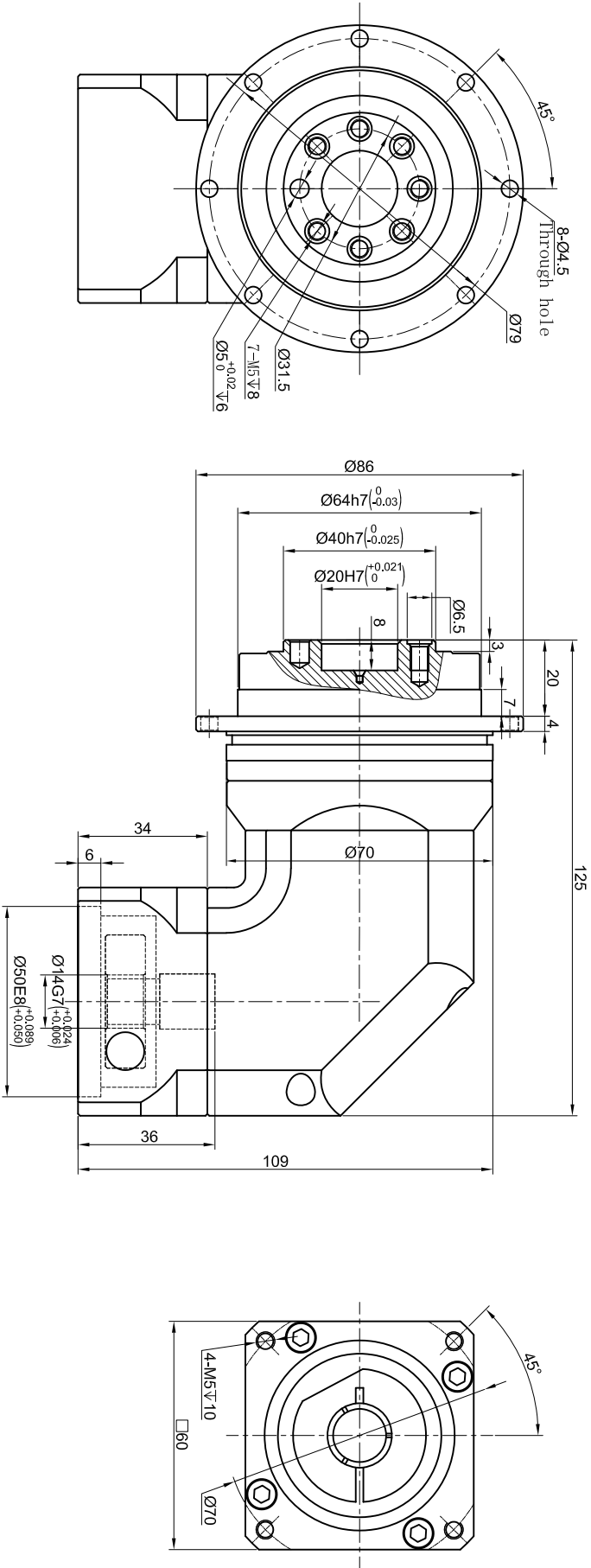


Customer Name:

Output



Input

Transmission ratio	(<u> A </u>) : 1	Mass moments of inertia	(<u> B </u>) Kg.cm ²												
Rated output torque	(<u> C </u>) Nm	Max.output torque	(<u> D </u>) Nm												
Rated input speed	5000rpm	Max input speed	10000rpm												
Max bending moment	125Nm	Max axial force	1050N												
Efficiency	≥ 95%	Operating temperature	-20°~+90°												
Mounting position	Any	Lubrication method	Synthetic grease												
Weight ±3%	2.2Kg	Service life	30000h												
Standard backlash	≤ 6 arcmin	Protection class	IP65												
Motor power	-- KW	Noise level	63dB												
Motor dimensions															

Note																				
	Mark	NO.	Sign	Date	Precision Planetary Reducer				TDR064											
					<div><div></div><div></div></div>				<div><div></div><div></div></div>											

Above specification are for standard reducer, No standard reducer only for reference