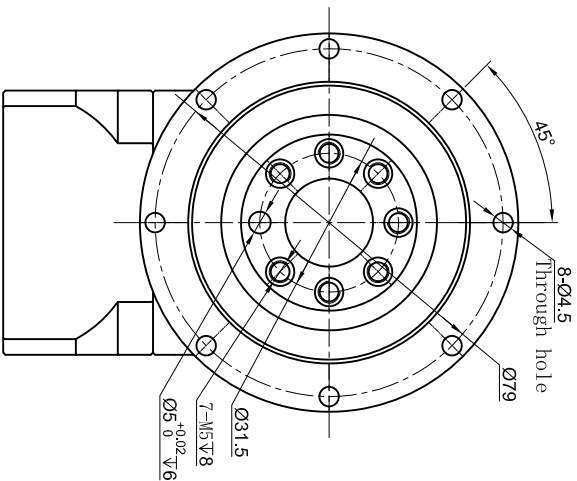
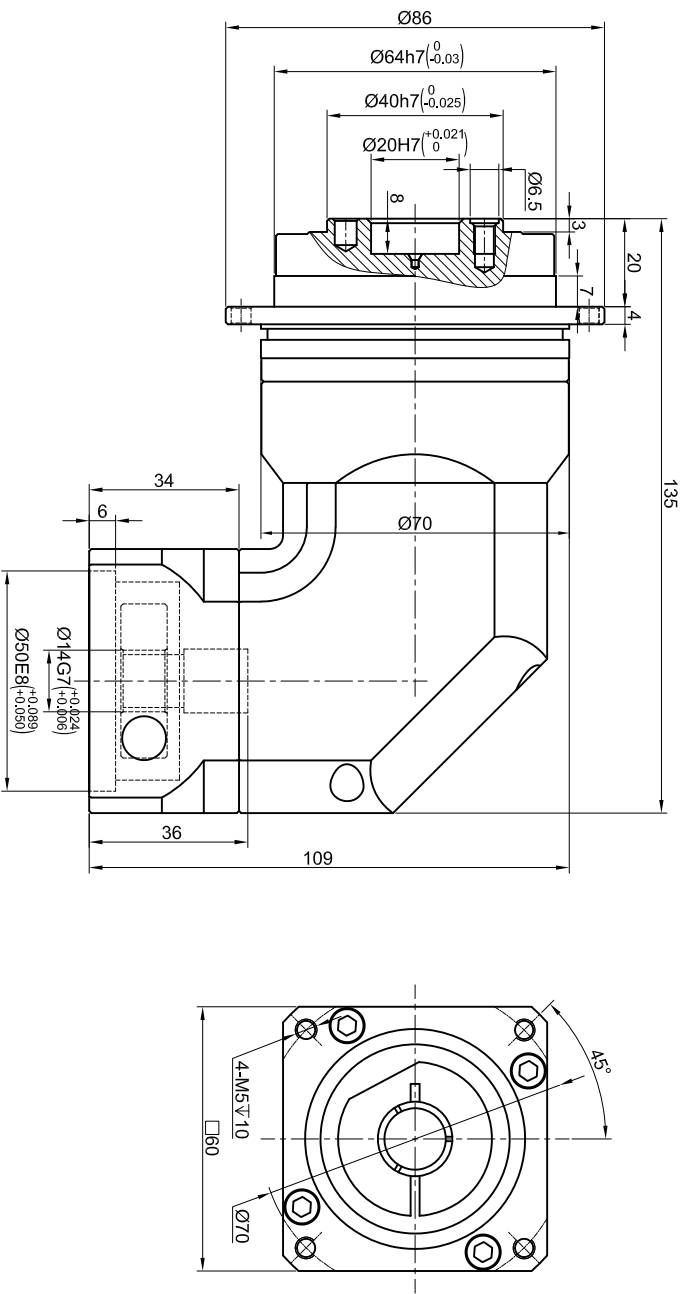


Customer Name:

Output



Input



Transmission ratio	( <u>  A  </u> ):1	Mass moments of inertia	( <u>  B  </u> )Kg.cm <sup>2</sup>																		
Rated output torque	( <u>  C  </u> )Nm	Max.output torque	( <u>  D  </u> )Nm		100	0.09	42	75	Sign/Date												
Rated input speed	5000rpm	Max input speed	10000rpm		70	0.09	50	90													
					50	0.09	58	104													
					40	0.09	48	86													
					35	0.09	50	90													
Max bending moment	125Nm	Max axial force	1050N		25	0.09	58	104				Ratio	A	B	C	D					
				Ratio	A	B	C	D													
Efficiency	≥ 92%	Operating temperature	-20°~+90°																		
Mounting position	Any	Lubrication method	Synthetic grease																		
Weight ±3%	2.6Kg	Service life	30000h																		
Standard backlash	≤ 9 arcmin	Protection class	IP65																		
Motor power	-- KW	Noise level	63dB																		
Motor dimensions																					
				Note								Precision Planetary Reducer				TDR064					
				Mark	NO.	Sign	Date														
								DRAW													
								CHEC													
								APPR													
				RULE																	
														TDR064-L2							
														Shaft Type				Precision			

Above specification are for standard reducer, No standard reducer only for reference