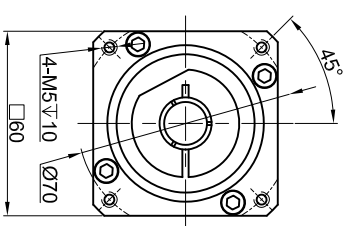
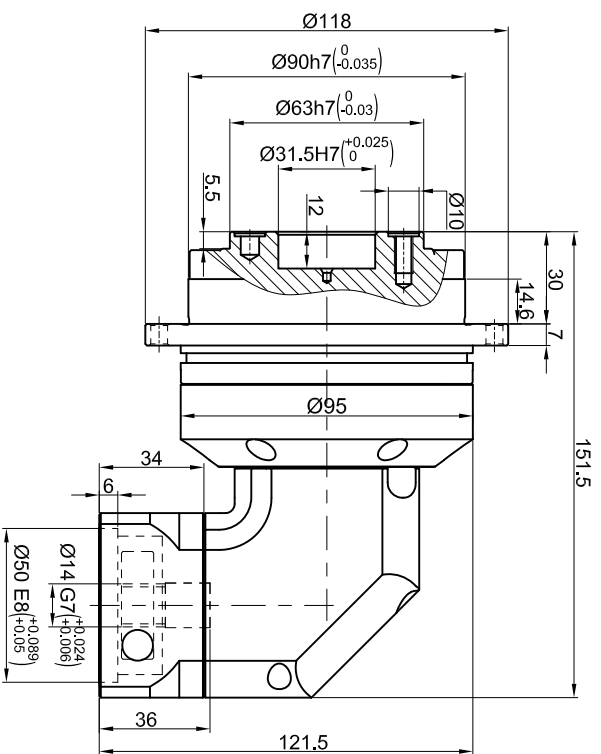
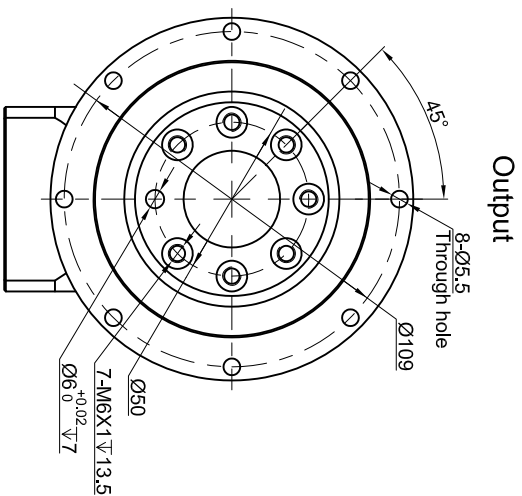




Customer Name:



Transmission ratio	(<u> A </u>):1	Mass moments of inertia	(<u> B </u>)Kg.cm ²																
Rated output torque	(<u> C </u>)Nm	Max.output torque	(<u> D </u>)Nm		100	0.35	102	183	Sign/Date										
					70	0.35	140	252											
					50	0.35	150	270											
					40	0.35	120	216											
					35	0.35	148	266			200	0.31	102	183					
Max bending moment	235Nm	Max axial force	2850N		25	0.35	160	288			140	0.31	140	252					
				Ratio	A	B	C	D		Ratio	A	B	C	D					
Efficiency	≥ 92%	Operating temperature	-20°~+90°																
Mounting position	Any	Lubrication method	Synthetic grease	Note								Precision Planetary Reducer				TDR090			
Weight ±3%	3.7Kg	Service life	30000h																
Standard backlash	≤ 9 arcmin	Protection class	IP65																
Motor power	-- KW	Noise level	65dB																
Motor dimensions																			

	<table><tr><td>DRAW</td><td>CHEC</td><td>APPR</td><td>RULE</td></tr><tr><td></td><td></td><td></td><td></td></tr></table>	DRAW	CHEC	APPR	RULE						<table><tr><td>Shaft Type</td><td>Precision</td></tr><tr><td></td><td></td></tr></table>	Shaft Type	Precision		
DRAW	CHEC	APPR	RULE												
Shaft Type	Precision														

Above specification are for standard reducer, No standard reducer only for reference