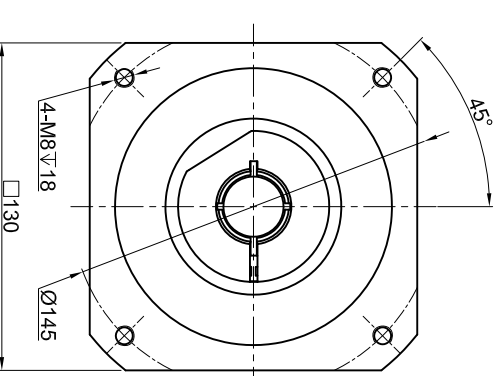
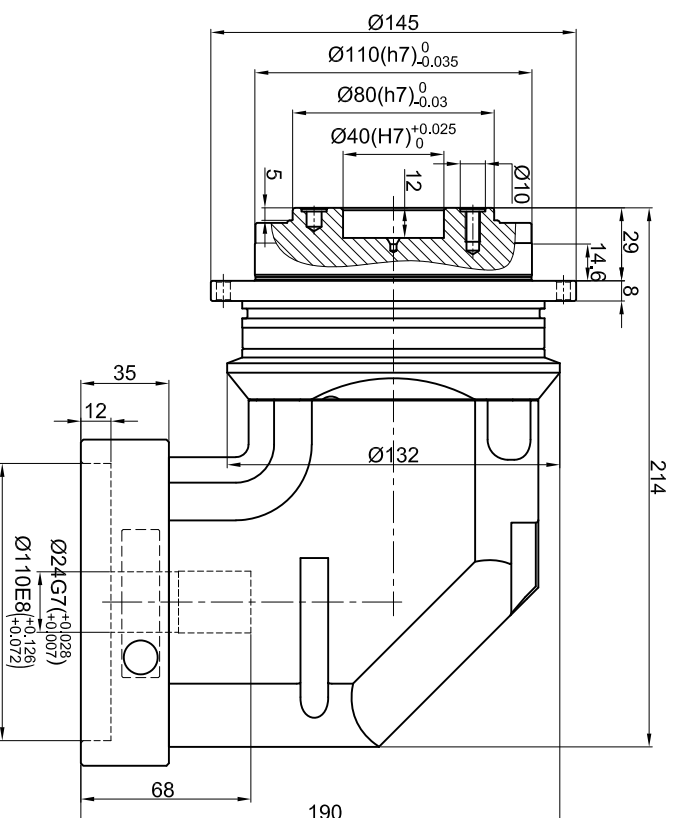
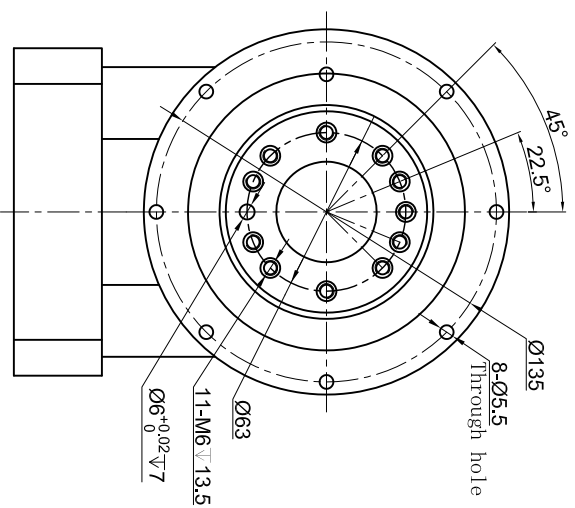



Customer Name:

## Output



## Input

Transmission ratio	( <u>A</u> ):1	Mass moments of inertia	( <u>B</u> )Kg.cm <sup>2</sup>
Rated output torque	( <u>C</u> )Nm	Max.output torque	( <u>D</u> )Nm
Rated input speed	4000rpm	Max input speed	8000rpm
Max bending moment	430Nm	Max axial force	2990N
Efficiency	≥ 95%	Operating temperature	-20°~+90°
Mounting position	Any	Lubrication method	Synthetic grease
Weight ±3%	10.5Kg	Service life	30000h
Standard backlash	≤ 6 arcmin	Protection class	IP65
Motor power	-- KW	Noise level	68dB
Motor dimensions			

	10	6.25	235	423	Sign/Date		20	6.25	235	423
	7	6.84	300	540						
	5	6.84	330	594			14	6.25	300	594
	4	6.84	260	468						
Ratio	A	B	C	D		Ratio	A	B	C	D
Note						Precision Planetary Reducer	TDR110			
Mark	NO.	Sign	Date				TDR110-L1			
	DRAW						Shaft Type Precision			
	CHEC									
	APPR									
	RULE									

Above specification are for standard reducer, No standard reducer only for reference