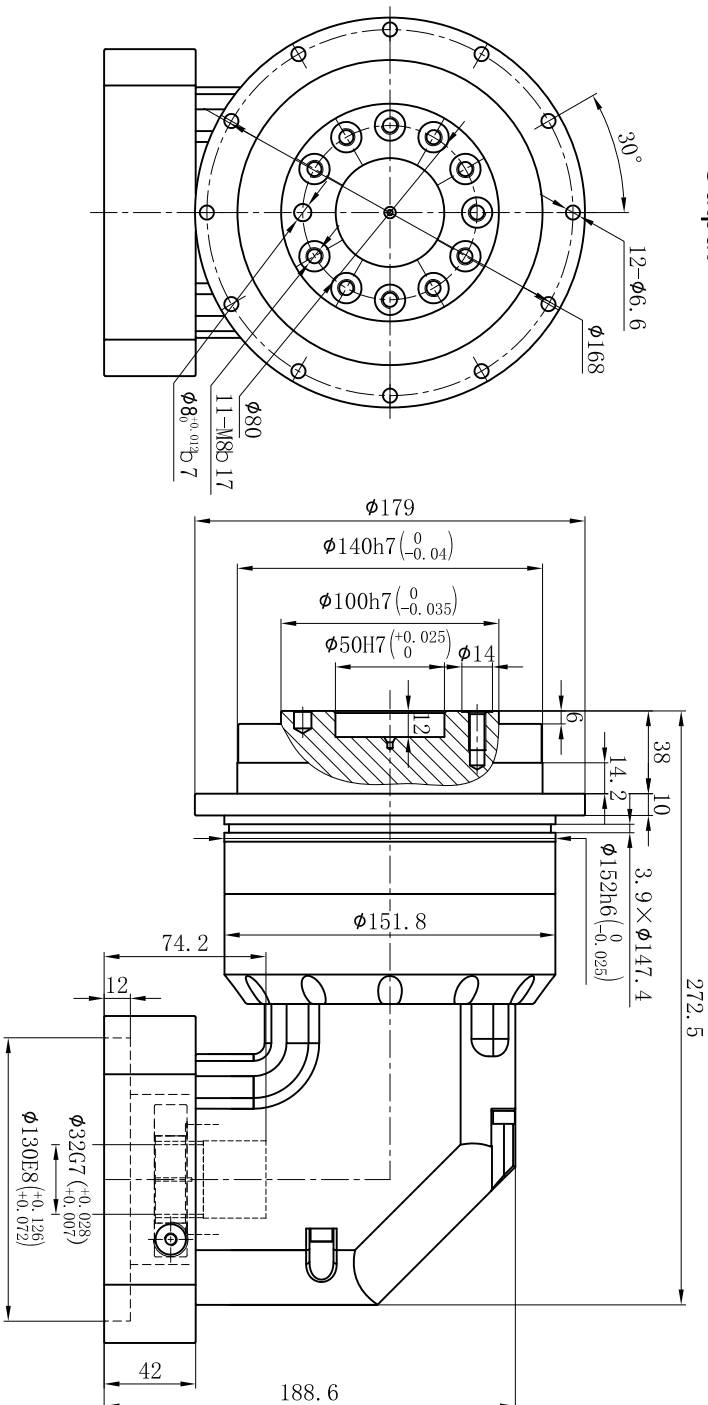
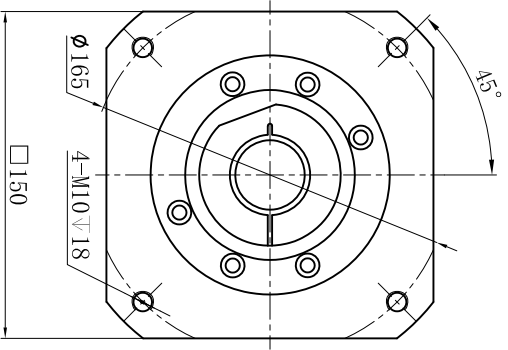




Customer name:

Output



Input



Transmission ratio	(<u> A </u>):1	Mass moments of inertia	(<u> B </u>)Kg.cm ²	The reducer is overloaded when the motor voltage is 320Vdc and 560Vdc														
Rated output torque	(<u> C </u>)Nm	Max.output torque	(<u> D </u>)Nm	25	6.84	650	1170	Sign/Date		140	6.25	550	990					
Rated input speed	3000rpm	Max input speed	6000rpm	35	6.84	550	990			200	6.25	450	810					
				40	6.84	560	1008											
				50	6.84	650	1170											
				70	6.84	550	990											
Max.Benging Moment	1300N	Max.Axial Force	10590N	100	6.84	450	810											
Efficiency	≥ 92%	Operating temperature	-20°~+90°	Ratio	A	B	C	D	Ratio				A	B	C	D		
Mounting position	Any	Lubrication method	Synthetic grease	Note				Precision planetary reducer					TDR140					
Weight ±3%	20.1Kg	Service life	300000h															
Standard backlash	≤ 7 arcmin	Protection class	IP65															
Motor power	-- kW	Noise level	70dB															
Motor dimensions																		
<div>Mark</div> <div>No.</div> <div>Sign</div> <div>Date</div>				<div></div> <div>DRAW</div> <div>CHEC</div> <div>APPR</div> <div>RULE</div>				<div></div> <div>®</div>				TDR140-L2				Shaft Type		Precision