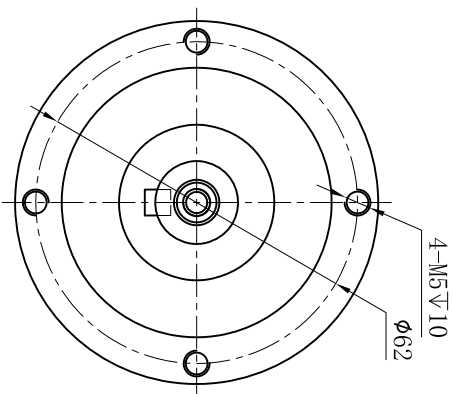
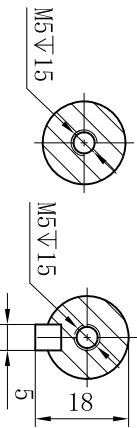
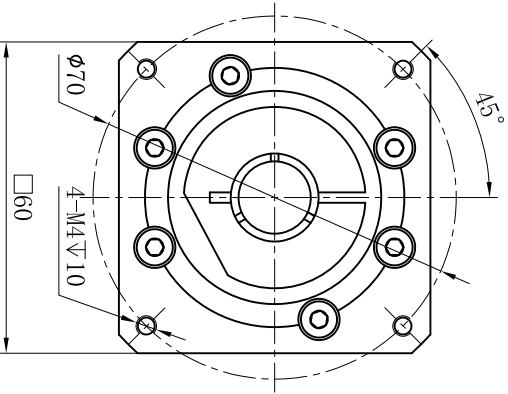
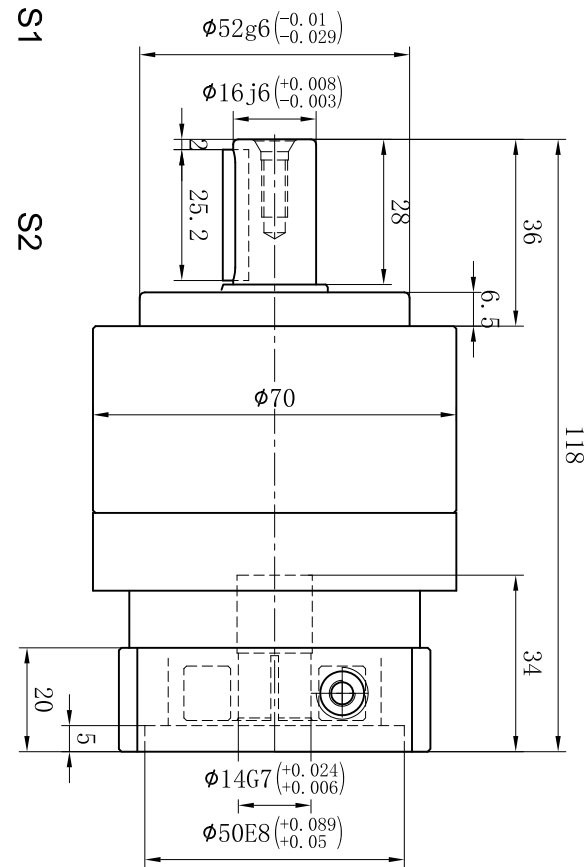


Customer Name:

Output

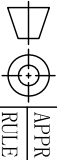



Input



S1

S2

Transmission Ratio	(<u> A </u>):1	Mass Moments Of Inertia	(<u> B </u>)Kg.cm ²												
Rated Output Torque	(<u> C </u>)Nm	Max Output Torque	(<u> D </u>)Nm												
Rated Input Speed	5000rpm	Max Input Speed	10000rpm					Sign/Date							
Max Radial Force	1377N	Max Axial Force	765N		3	0.16	52	93.6		7	0.13	50	81	90	
					4	0.14	50	90		8	0.13	45			
					5	0.13	58	104.4		10	0.13	42	75.6		
Efficiency	≥ 97%	Operating Temperature	-20°~+90°		6	0.13	55	99							
				Ratio	A	B	C	D	Ratio	A	B	C	D		
Mounting Position	Any	Lubrication Method	Synthetic grease	Note				Precision Planetary Reducer				TE070			
Weight ±3%	1.4Kg	Service Life	20000h												
Standard Backlash	≤ 5 arcmin	Protection Class	IP65	Mark	No.	Sign	Date	TE070-L1							
Motor Power	-- KW	Noise Level	58dB									Shaft Type		Precision	
Motor Dimensions															

Above specifications are for standard reducer and may be subject to change without notice.