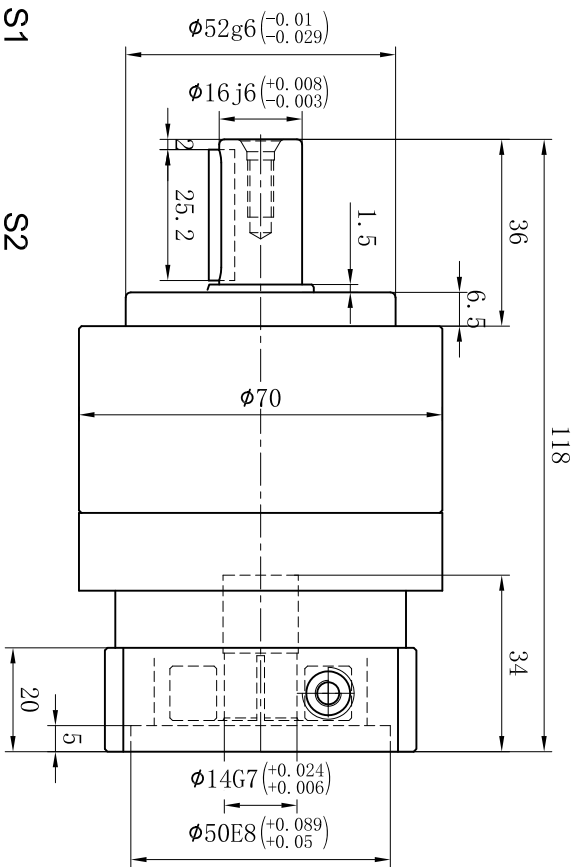
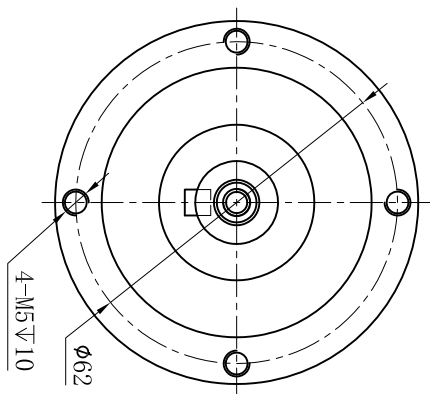
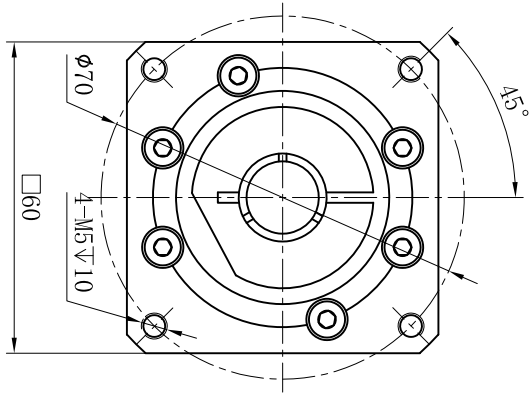


Customer Name:

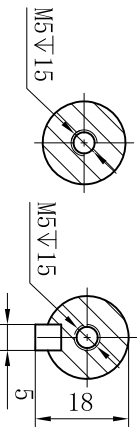
Output





Input



S1 S2



Transmission Ratio	(<u> A </u>):1	Mass Moments Of Inertia	(<u> B </u>)Kg.cm ²												
Rated Output Torque	(<u> C </u>)Nm	Max Output Torque	(<u> D </u>)Nm												
Rated Input Speed	5000rpm	Max Input Speed	10000rpm	6	0.13	55	99	Sign/Date							
				5	0.13	58	104.4		10	0.13	42	75.6			
				4	0.14	50	90		8	0.13	45	81			
				3	0.16	52	93.6		7	0.13	50	90			
Max Radial Force	1377N	Max Axial Force	765N	Ratio	A	B	C	D	Ratio		A	B	C	D	
Efficiency	≥ 97%	Operating Temperature	-20°~+90°	Note				Precision Planetary Reducer				TE070			
Mounting Position	Any	Lubrication Method	Synthetic grease												
Weight ±3%	1.4Kg	Service Life	20000h	Mark	No.	Sign	Date								
Standard Backlash	≤ 5 arcmin	Protection Class	IP65									TE070-L1			
Motor Power	-- KW	Noise Level	58dB												
Motor Dimensions															

Above specifications are for standard reducer and may be subject to change without notice.