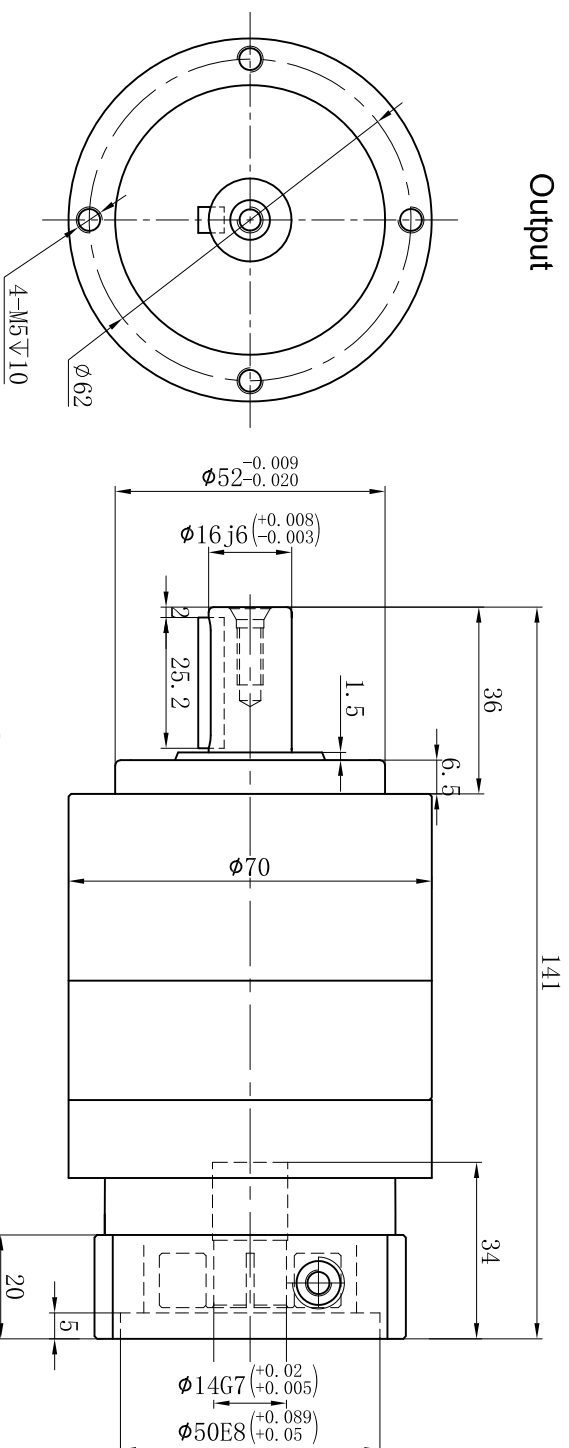
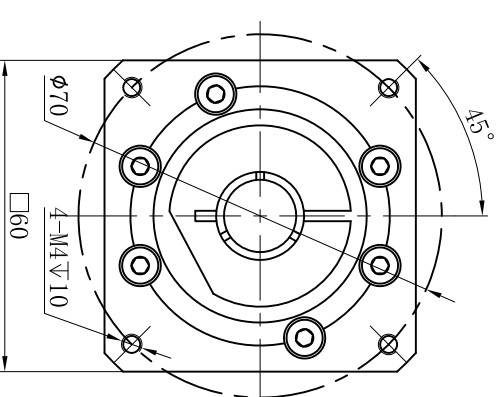


Customer Name:

Output

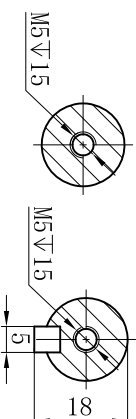


Input





51

§ 2



Transmission Ratio	(<u> A </u>):1	Mass Moments Of Inertia	(<u> B </u>)Kg.cm ²		40	0.13	45	81	Sign/date					
Rated Output Torque	(<u> C </u>)Nm	Max Output Torque	(<u> D </u>)Nm		35	0.13	50	90			100	0.13	42	75.6
Rated Input Speed	5000rpm	Max Input Speed	10000rpm		30	0.13	55	99			80	0.13	45	81
Max Radial Force	1377N	Max Axial Force	765N		25	0.13	58	104.4			70	0.13	50	90
					20	0.13	50	90			60	0.13	55	99
Efficiency	≥ 94%	Operating Temperature	-20°~+90°	Ratio	15	0.13	52	93.6		50	0.13	58	104.4	
Mounting Position	Any	Lubrication Method	Synthetic grease	Note					Precision Planetary Reducer	Ratio	A	B	C	D
Weight ±3%	1.6Kg	Service Life	20000h		Mark	No.	Sign	Date	Precision Planetary Reducer	TEO70-L2	Shaft Type	Precision		
Standard Backlash	≤ 7 arcmin	Protection Class	IP65											
Motor Power	-- kW	Noise Level	58dB											
Motor Dimensions														





Above specifications are for standard reducer and may be subject to change without notice.