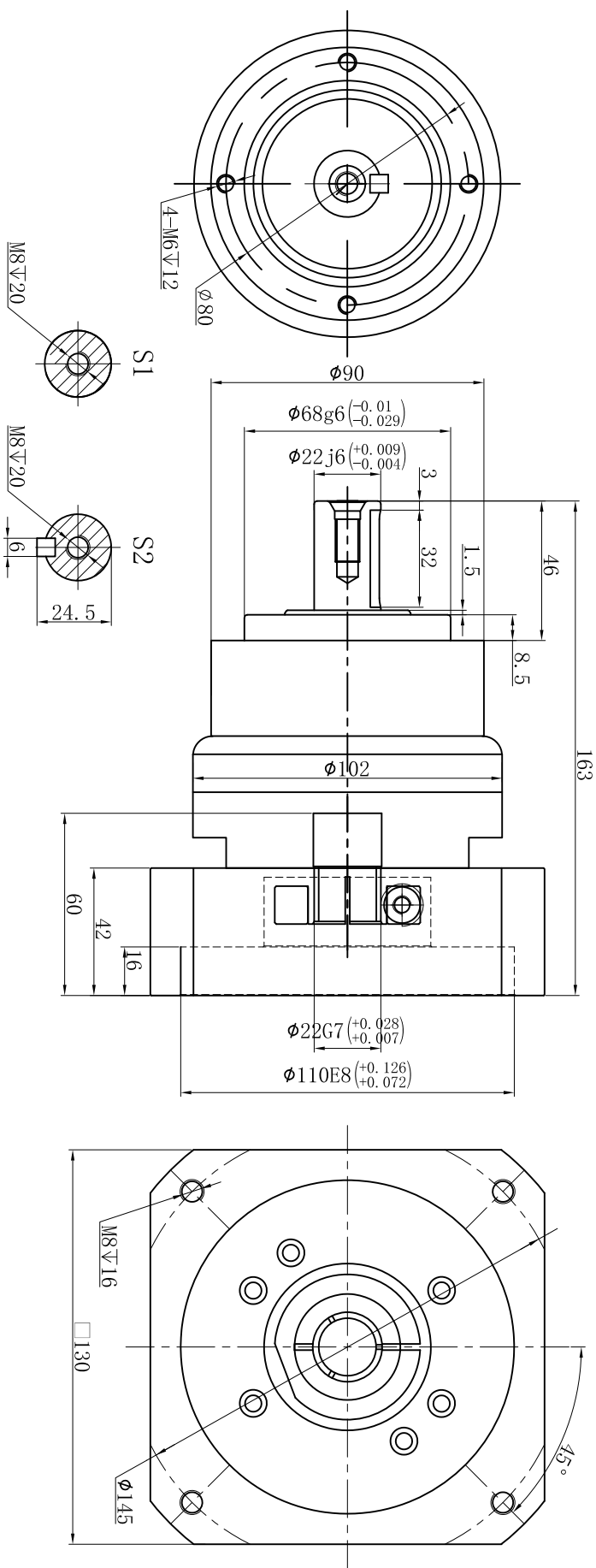




Customer name:

Output



Input

Transmission ratio	( <u>  A  </u> ):1	Mass moments of inertia	( <u>  B  </u> )Kg.cm <sup>2</sup>																
Rated output torque	( <u>  C  </u> )Nm	Max.output torque	( <u>  D  </u> )Nm																
Rated input speed	4000rpm	Max input speed	8000rpm	10	0.44	102	183	Sign/Date											
				7	0.45	140	252												
				5	0.47	160	280												
				4	0.48	140	252												
Max.radial force	2985N	Max.axial force	1625N	Ratio	A	B	C	D					Ratio	A	B	C	D		
Efficiency	≥ 97%	Operating temperature	-20°~+90°	Note								Precision planetary reducer				TE090			
Mounting position	Any	Lubrication method	Synthetic grease																
Weight ±3%	3.4Kg	Service life	20000h																
Standard backlash	≤ 5 arcmin	Protection class	IP65																
Motor power		Noise level	60dB																
Motor dimensions																			

																			
Mark		No.		Sign		Date		DRAW		CHEC						APPR		RULE	
												Shaft Type				Precision			

Above specifications are for standard reducer and may be subject to change without notice.