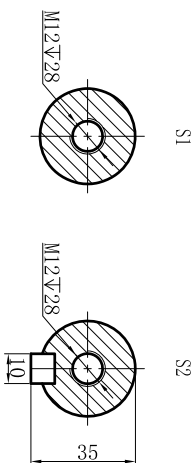
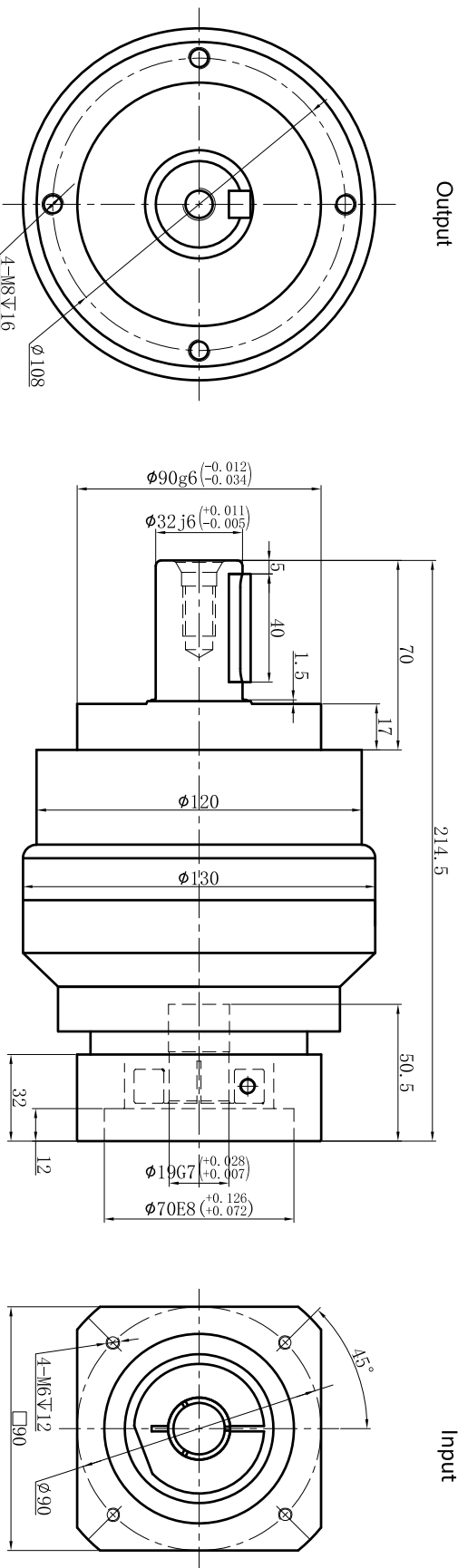


Customer name:



Transmission ratio	( A ):1	Mass moments of inertia	( B )Kg.cm <sup>2</sup>										
Rated output torque	( C )Nm	Max.Output torque	( D )Nm	40	0.47	260	468	Sign/Date					
Rated input speed	4000rpm	Max input speed	8000rpm	35	0.47	300	540						
Max.radial force	6100N	Max.axial force	3350N	30	0.47	310	558						
Efficiency	≥ 94%	Operating temperature	-20°~+90°	25	0.47	333	599.4						
Mounting position	Any	Lubrication method	Synthetic grease	20	0.47	290	522						
Weight ±3%	8.5Kg	Service life	20000h	15	0.47	210	378		Ratio	A	B	C	D
Standard backlash	≤ 7 arcmin	Protection class	IP65	NOTE									
Motor power		Noise level	63dB										
Motor dimensions													

Mark	No.	Sign	Date	Precision Planetary Reducer	TE120
DRAW					
CHEC					
APPR					
RULE					

Shaft Type	Precision
TE120-L2	

Above specifications are for standard reducer and may be subject to change without notice.