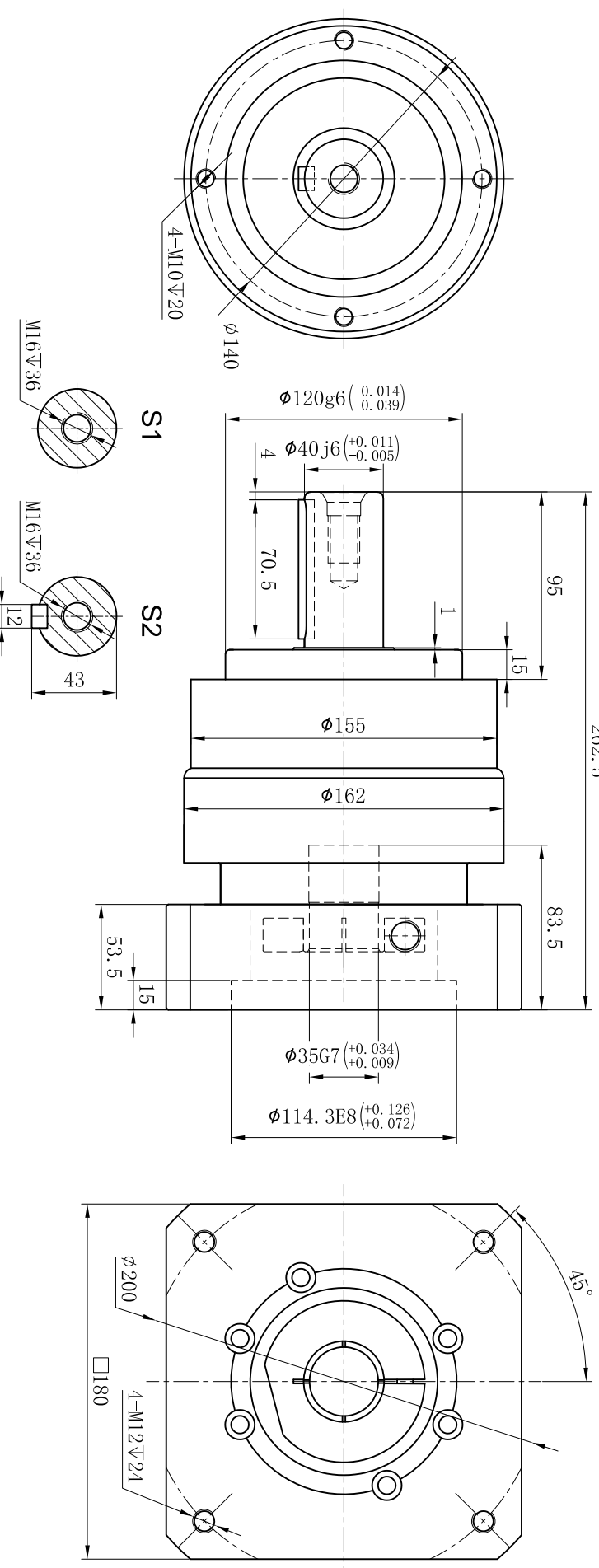




Customer Name:

Output

262.5

Input



| | | | | | | | | | | | | | | | |
|---------------------|--------------------|-------------------------|------------------------------------|-------|-----|---|------|------|-----------|--|-----------------------------|---|------------|-----------|---|
| Transmission Ratio | (<u> A </u>):1 | Mass Moments Of Inertia | (<u> B </u>)Kg.cm ² | | | | | | | | | | | | |
| Rated Output Torque | (<u> C </u>)Nm | Max Output Torque | (<u> D </u>)Nm | | | | | | | | | | | | |
| Rated Input Speed | 3000rpm | Max Input Speed | 6000rpm | | 6 | 7.25 | 600 | 1080 | Sign/Date | | | | | | |
| Max Radial Force | 8640N | Max Axial Force | 4700N | | 5 | 7.42 | 650 | 1170 | | | 10 | 7.03 | 460 | 828 | |
| | | | | | 4 | 7.54 | 545 | 981 | | | 8 | 7.07 | 500 | 900 | |
| | | | | | 3 | 9.21 | 340 | 612 | | | 7 | 7.14 | 555 | 999 | |
| Efficiency | ≥ 97% | Operating Temperature | -20°~+90° | Ratio | A | B | C | D | | | Ratio | A | B | C | D |
| Mounting Position | Any | Lubrication Method | Synthetic grease | Note | | | | | | | Precision Planetary Reducer | | TE155 | | |
| Weight ±3% | 18Kg | Service Life | 20000h | | | | | | | | | | | | |
| | | | | Mark | No. | Sign | Date | | | | | | | | |
| Standard Backlash | ≤ 5 arcmin | Protection Class | IP65 | | | | | | | | | | TE155-L1 | | |
| Motor Power | -- kW | Noise Level | 65dB | | | | | | | | | | Shaft Type | Precision | |
| Motor Dimensions | | | | | |  | | | | | |  | | | |

Above specifications are for standard reducer and may be subject to change without notice.