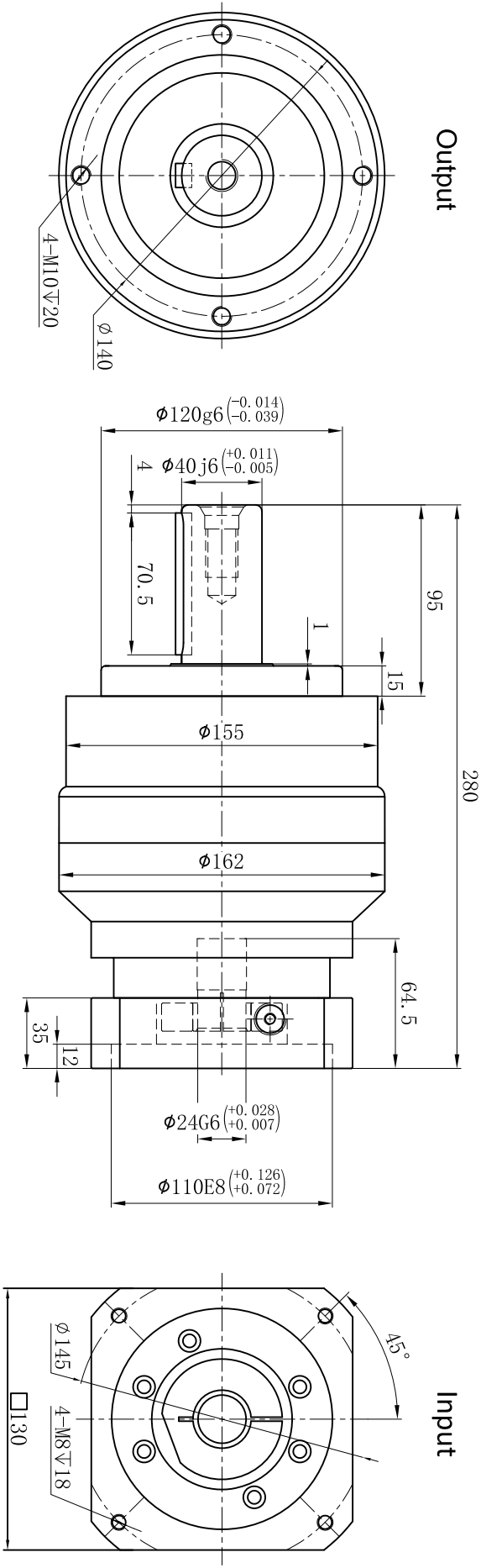
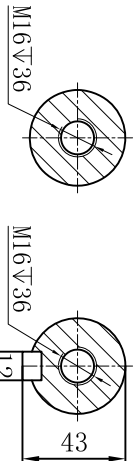



Customer Name:

Output



S1 S2



Transmission Ratio	( <u>  A  </u> ):1	Mass Moments Of Inertia	( <u>  B  </u> )Kg.cm <sup>2</sup>											
Rated Output Torque	( <u>  C  </u> )Nm	Max Output Torque	( <u>  D  </u> )Nm	40	2.71	500	900	Sign/Date						
Rated Input Speed	3000rpm	Max Input Speed	6000rpm	35	2.71	555	999			100	2.57	460	828	
				30	2.71	600	1080			80	2.57	500	900	
				25	2.71	650	1170			70	2.57	555	999	
				20	2.71	545	981			60	2.57	600	1080	
Max Radial Force	8460N	Max Axial Force	4700N	15	2.71	340	612			50	2.57	650	1170	
				Ratio		A	B	C	D	Ratio		A	B	C
Efficiency	≥ 94%	Operating Temperature	-20°~+90°	Note						Precision Planetary Reducer		TE155		
Mounting Position	Any	Lubrication Method	Synthetic grease											
Weight ±3%	17Kg	Service Life	20000h											
Standard Backlash	≤ 7 arcmin	Protection Class	IP65	Mark	No.	Sign	Date	<div></div>						
Motor Power	-- kW	Noise Level	65dB											
Motor Dimensions														

Above specifications are for standard reducer and may be subject to change without notice.